

KARIBAN

K6108

Ladies' parka

- Supple and hard-wearing fabric with a thermal memory.
- Quilted lining for heat retention and optimal comfort.
- Thick, functional and comfortable.

Outer: 100% polyester Oxford. Inner: quilted polyester. Zip fastening with invisible tab and press studs. 2 zipped outside pockets. 1 inside pocket. Detachable hood. Fleece-lined collar. Zip access for decoration. Average weight size M : 1010g.



More information

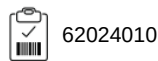
Logistic



Country of origin



Customs code



Also available in version



K677 K696

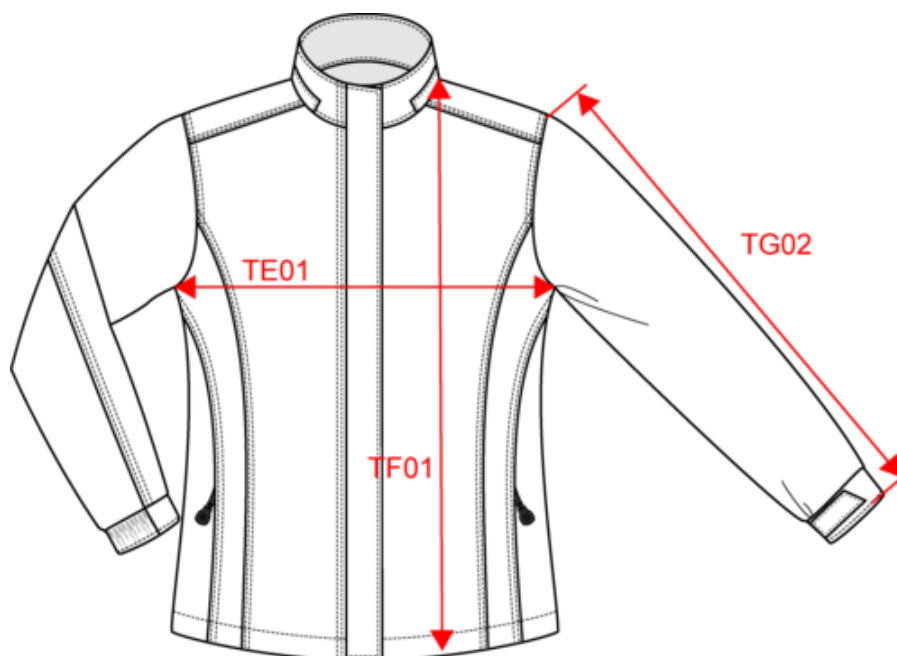


KARIBAN

K6108

Ladies' parka

Dimensions (cm)










Measurements in cm	XS	S	M	L	XL	XXL	3XL
TE01 - 1/2 chest width at 1.5cm below armhole	47.00	50.00	53.00	56.00	59.00	62.00	65.00
TF01 - Total height from HSP	71.00	73.00	75.00	77.00	79.00	81.00	83.00
TG02 - Long sleeve length	62.50	63.50	64.50	65.50	66.50	67.50	68.50

KARIBAN

K6108

Ladies' parka

Colours information

 Black RVB : 35,35,37 Pantone C : Black Pantone TCX : 19-4004TCX	 Dark Grey RVB : 63,60,60 Pantone C : 447C Pantone TCX : 19-0000TCX	 Forest Green RVB : 41,62,48 Pantone C : 5605C Pantone TCX : 19-5918TCX	 Light Royal Blue RVB : 53,95,151 Pantone C : 653C Pantone TCX : 18-4041TCX	 Navy RVB : 41,46,56 Pantone C : 433C Pantone TCX : 19-4012TCX
 Red RVB : 195,32,54 Pantone C : 200C Pantone TCX : 19-1664TCX	 Snow Grey RVB : 170,174,175 Pantone C : 421C Pantone TCX : 15-4101TCX			

Logistic  1  10

Sizes	Width (cm)	Height (cm)	Length (cm)	Net weight (kg)	Gross weight (kg)	Pieces/Box	Pieces/Bundle
XS	39.00000	40.00000	53.00000	9.00000	10.00000	10	1
S	39.00000	40.00000	53.00000	9.60000	10.60000	10	1
M	41.00000	40.00000	57.00000	10.20000	11.20000	10	1
L	41.00000	40.00000	57.00000	10.60000	11.60000	10	1
XL	43.00000	40.00000	61.00000	11.30000	12.30000	10	1
XXL	43.00000	40.00000	61.00000	11.80000	12.80000	10	1
3XL	44.00000	40.00000	64.00000	12.20000	13.20000	10	1